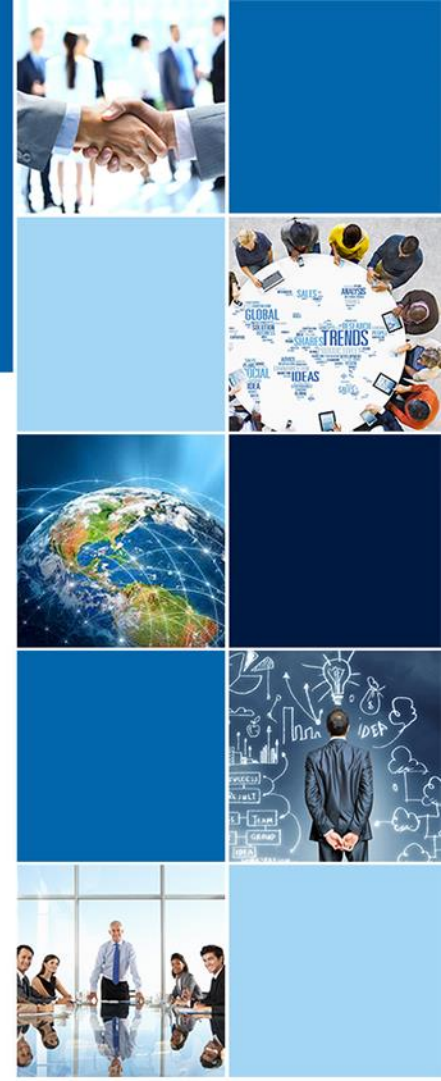


# PRATON<sup>®</sup>

*Let's Connect!*<sup>™</sup>

**ALLNET Schweiz**  
**ICT Solution Day Schweiz**





## Lachen Seebuben Springen

## ABOUT US

**M**ultinational company incorporated in USA since **1984**

**W**ith customers in **160 countries, 14 offices** all around the world, 7 technical support centers and 3 logistic centers

**W**e designs, engineer and manufacture voice and data communication solutions

**O**ur mission is to support Service Providers, Value Added Resellers and System Integrators in their transition to All-IP enabling Unified Communications

*Let's Connect!™*

# TODAYS VOICE CHALLENGES IN THE ALL-IP TRANSITION



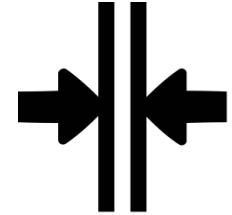
Disruptive  
TDM/ISDN to SIP



Risk of Churn



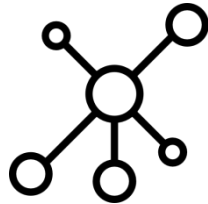
Reliability IP vs.  
Legacy



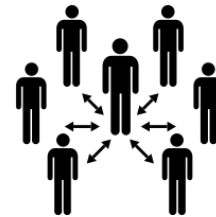
Demarcation  
WAN/LAN



Security and  
Redundancy



Interoperability PBX  
IP Core Provisioning



TCO Mass  
deployment Support



Adding Integrated  
Services

# YOUR SOLUTION TO THESE CHALLENGES

## SmartNode Enterprise & Carrier Gateway



### Best Quality

Designed, produced & supported in-house  
Enterprise Carrier Grade  
Highest MTBF  
Lowest RMA/DOA



### Differentiation

Technology Partnership approach  
Software adapts to every use case  
High-End software features  
Flexible hardware configuration

# YOUR SOLUTION TO THESE CHALLENGES

## SmartNode Enterprise & Carrier Gateway



### Fastest Time to Market

- Numerous references and use cases
- Proven interoperability all around the globe
- Highest Support standards
- Global channel coverage



### Lowest TCO

- Zero-Touch and OSS/BSS integrated provisioning
- Full Management & Reporting
- Platform for future services
- Cost-Effective - Long Life-Span
- VNF & Cloud Services



**Gartner recommends SmartNode**  
*“Patton specializes in cost-optimized E-SBC solutions for SMBs”*

**Gartner**

# PATTON PROVEN TECHNOLOGY PARTNERSHIPS

UNIFY



Microsoft



broadsoft

Yealink



Asterisk™

SNOM

3CX

GFI



HUAWEI

STARFACE  
COMFORTPHONING

UCWARE

aare  
net

SWYX



GENBAND

KALLIOPE  
PBX

TE-SYSTEMS  
competence in e-communications.

winet  
network solutions

ALCATEL  
home & business phones

SIPLEO  
Telefonie-Entscheidungen auf IP

Gigaset pro

Cirpack

CommuniGate  
SYSTEMS

amiritel

PORTA  
ONE

WISPO

elastix  
FREEDOM TO COMMUNICATE

openser

pascom  
Netzwerktechnik GmbH & Co. KG

SYLANTRO

brekeke

dexgate

Dialexia

CONNECTEO

Metaswitch  
Networks

VoiSmart®  
Quality Partner

AASTRA

centile  
IP Communication Applications

Panasonic

# PATTON A TRUSTED PARTNER WITH GLOBAL COVERAGE

bouygues  
TELECOM



vodafone



swisscom

STC  
الاتصالات السعودية



WIND  
Più vicini.

Sunrise



upc



TELE  
KOM  
AUS  
TRIA

phonect

KVANTTEL



RoutIT

Placetel | Digicel | BUSINESS  
Die Telefonanlage aus der Cloud.

INEXIO  
CONNECTING YOUR BUSINESS

HFO Telecom

ip only

versatel

ECN  
electronic  
communications  
network

finecom  
BROADBAND ACCESS

welcome italia  
i migliori servizi di telecomunicazione per la vostra impresa



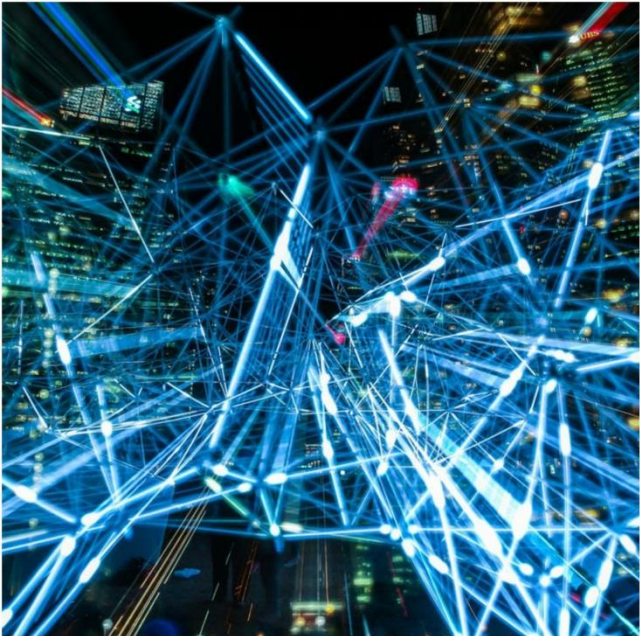
citynet  
IT-WELT DER HALL AG

LVM  
VERSICHERUNG

VSE NET  
Telekommunikation



# PORTFOLIO – Voice & Data



Unified Communications

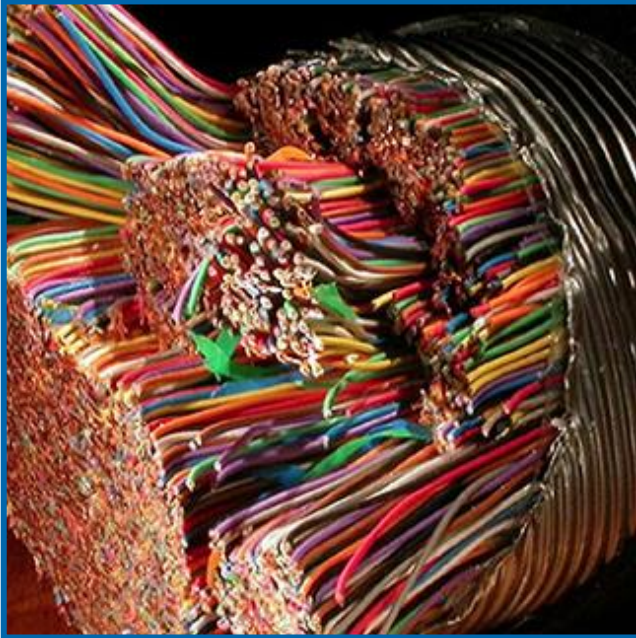


Cloud

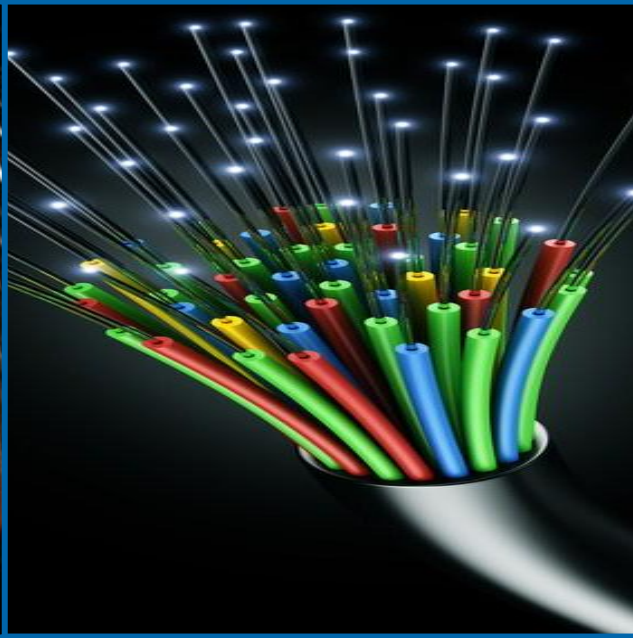


VNF

## PORTFOLIO - Connectivity



Copper Access

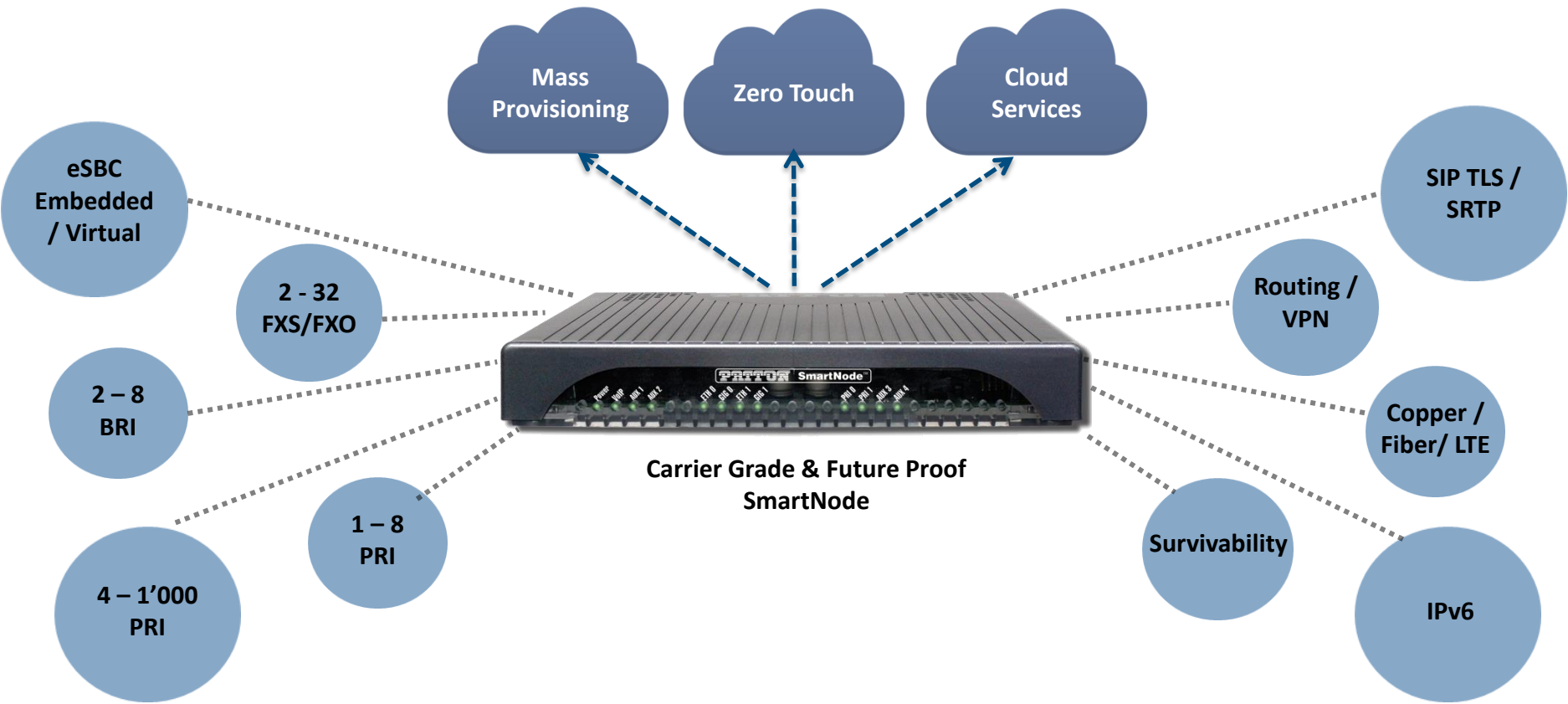


Fiber Access



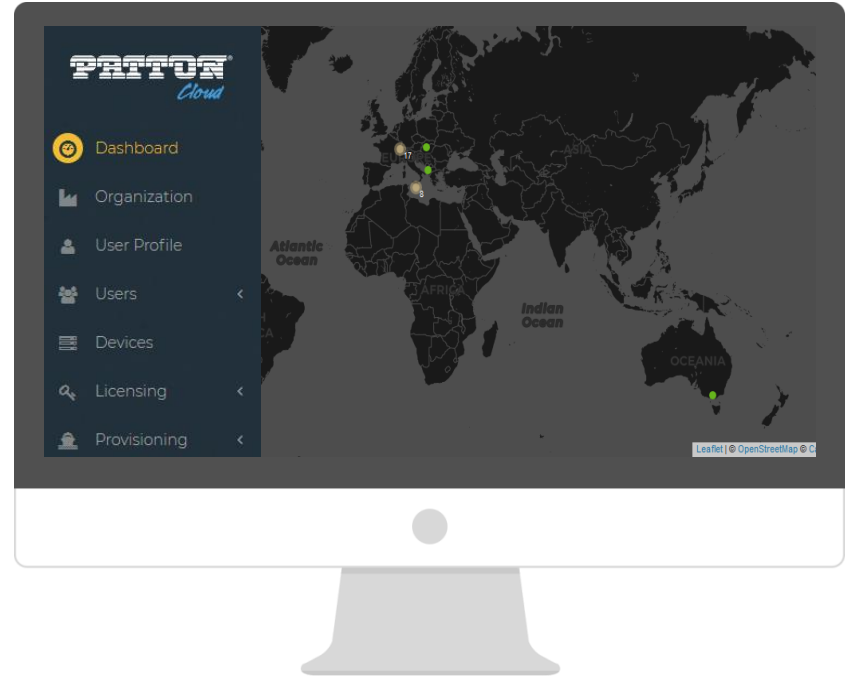
Special Projects

# UC – All-IP



# PATTON CLOUD

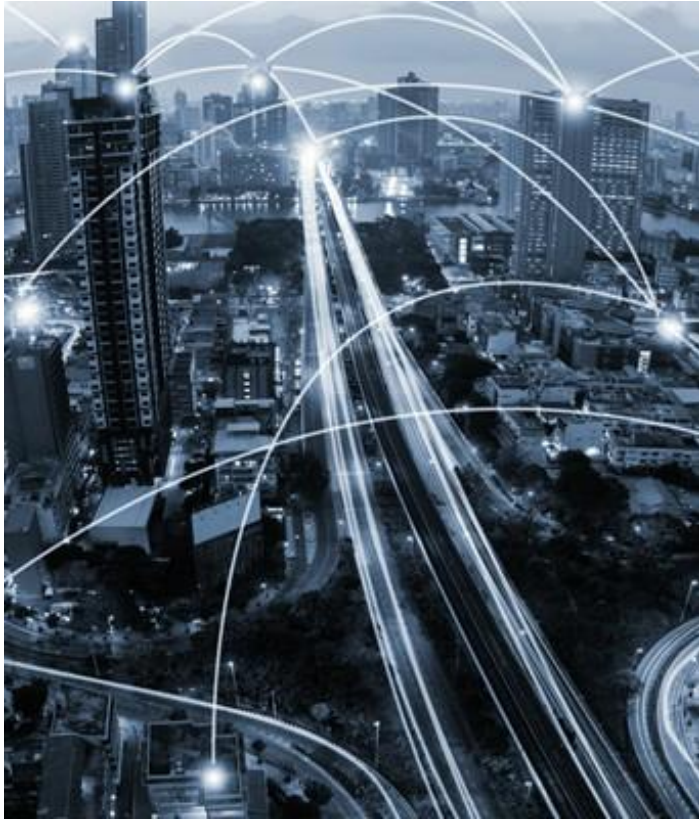
- ▶ Centralized platform for monitoring Patton devices
- ▶ Online Software license management & distribution
- ▶ Multitenant solution
- ▶ Remote customer troubleshooting
- ▶ One click Configuration & Firmware management
- ▶ Zero touch provisioning



## OUR VISION

**Innovation and Competitive Technologies which make the difference in the Market. Going from Hardware to Virtualized environments.**





# CONTACT US!



Meriedweg 7, 3172 Niederwangen  
Switzerland

---



[sales@patton-inalp.com](mailto:sales@patton-inalp.com)



+41 31 985 25 25

A glowing blue globe is centered in the image, surrounded by a dense field of blue particles and light rays. The globe is semi-transparent, showing the continents. The text "Let's Connect!" is written in a white, cursive font across the center of the globe.

*Let's Connect!*