



Product Update

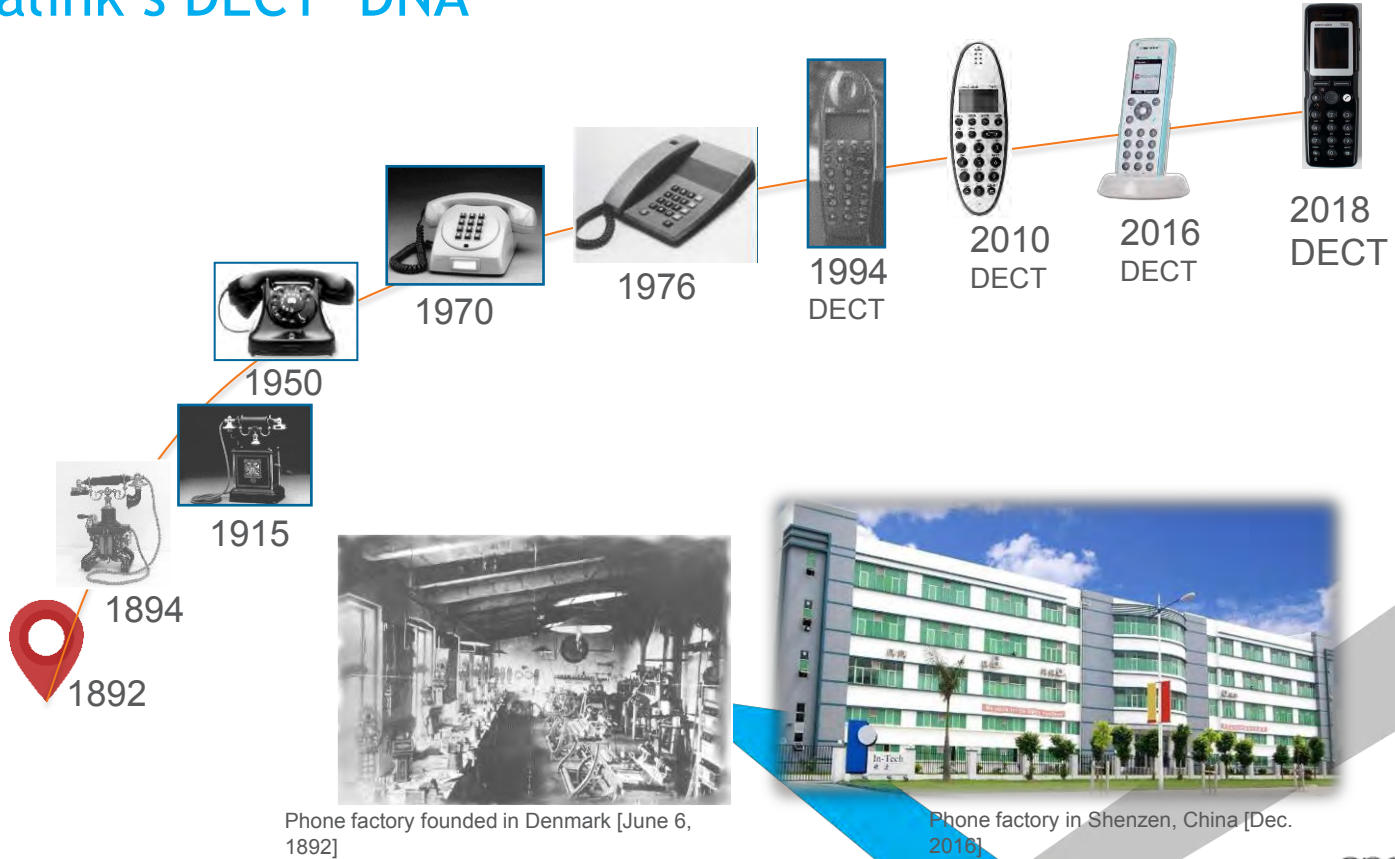
May 2018

Our history

Spectralink was founded in 1990 in Boulder, Colorado when we invented the first purpose-built mobile devices to serve the unique needs of mobile workers.



Spectralink's DECT DNA



Enterprise DECT Mobility | Key Verticals FOCUS



Healthcare /
Elderly Care



Hospitality



Manufacturing



Retail Chain



Banking /
Finance

Spectralink DECT Enterprise Mobility Solution for All Your Needs

Spectralink DECT Solution - Overview

High level overview

DECT Product Overview - TODAY



IP-DECT Server(s)

Hybrid-DECT Server(s)

Model: 400
Multi-Cell
4-30 Users

Model: 6500
Multi-Cell
30 – 4K Users

Model: 2500
Multi-Cell
4 – 150 Users

Model: 8000
Multi-Cell
150 – 4K Users



Butterfly
Handset

75-Series
Handset

72-Series
Handset

76-Series
Handset

77-Series
Handset



DECT Innovation & Product Planning

DECT Product Overview | Updated

new



SOHO

Model: 200
Single-Cell
2-12 Users



7502
Handset



IP-DECT Server(s)

Model: 400
Multi-Cell
4-30 Users



Butterfly
Handset



Model: 6500
Multi-Cell
30 – 4K Users



75-Series
Handset



Hybrid-DECT Server(s)

Model: 2500
Multi-Cell
2 – 150 Users



72-Series
Handset



Model: 8000
Multi-Cell
150 – 4K Users



76-Series
Handset

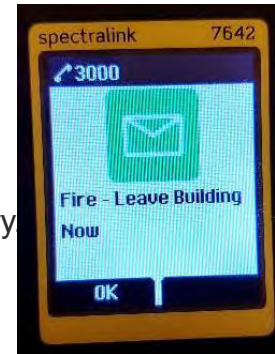


77-Series
Handset

Centralise Management & End-End Security

7502 DECT Handset

- New 7502 Entry Level DECT Handset Model
- Colour: Black ONLY
- Colour Display
- Wired Headset Support
- Replaceable Li-ion Battery
- Vibration Alert – Yes
- Targeted Messaging – (24 char) – e.g. “Fire Alert. Leave NOW”
- Rx Broadcast Messaging supported. XML API can confirm message delivery
- All standard languages supported (15)
- Notes:
 - Call Transfer Icon under “R” key
 - Voicemail icon under “1” key



Message Example



ITSP / SP - SOHO Segment Product Fit DECT Solution

- Product Required:
 - Cost effective single cell DECT solution
 - 200 IP-DECT Server
 - (e.g. 200 IP-DECT Server + Built-in DECT Radio Base Station).
 - Max Handsets Supported: 12 handsets
 - Simultaneous Calls: 6
 - Repeaters: 3
- Zero-Touch Provisioning Support
 - Redirection Server to point to ITSP / SP's Provisioning Server
 - Server to securely download firmware, config & user settings
 - Handset firmware Updated OTA
 - Handset configuration over the air (Planned)



Spectralink DECT servers	200
Markets	SOHO Store Chain
PBX Integration	IP (SIP)
Spectralink IP-DECT Base Station	Single Cell
Spectralink Repeaters	3 per base station
DECT Handsets (max No. subscriptions)	12
Max. no. of simultaneous calls	6



Handset:

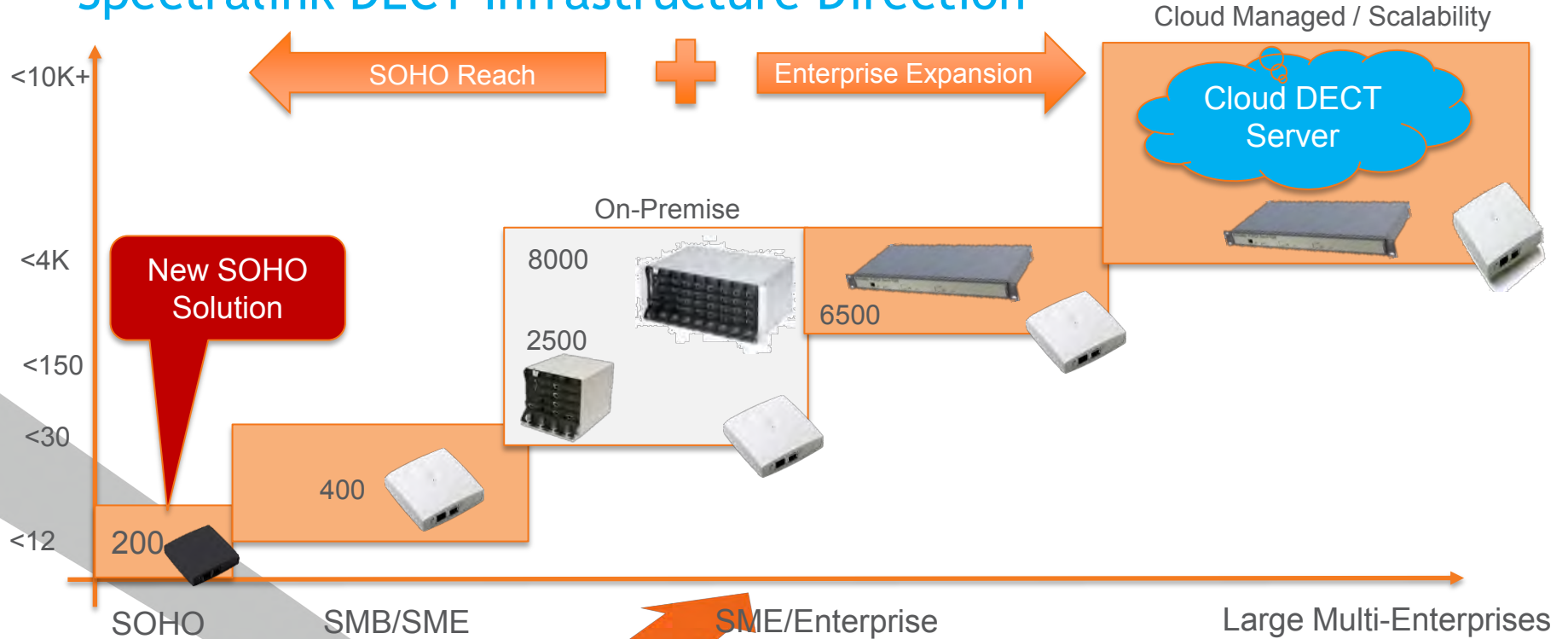
1. Supports ability to receive 24 character TEXT Message (e.g. "Fire Alarm")
2. Integration with leading UC/UCaaS Call Control Platforms – including:
 - Cisco CUCM/HCS *
 - Broadsoft Broadworks
 - Microsoft SfB
 - Others (as standard) IP-PBX / UC platforms supported
3. Li-ion battery

Key IP-PBX / Call Control / UC Platform Focus

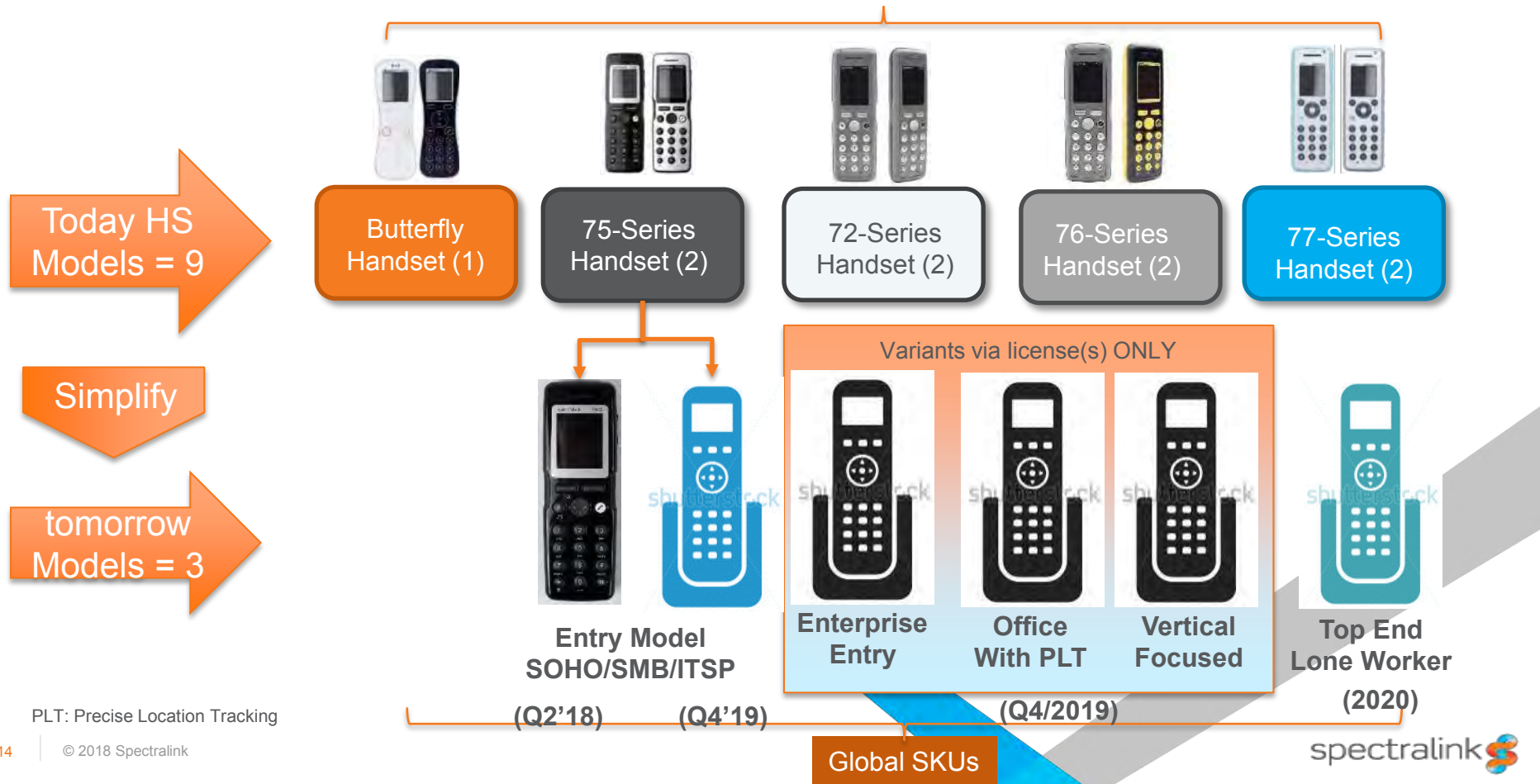
- Avaya
 - Aura – (supported)
 - IP Office – (supported)
- Broadsoft
 - BroadWorks – (supported)
 - BroadCloud (Managed Broadworks) – (plan)
- Cisco
 - CUCM – (supported)
 - HCS – (supported)
 - Spark – (plan)
- Microsoft
 - Skype for Business On-Prem - (supported)
 - MS Teams (Skype for Business Online) – (plan)
- Asterisk Based
 - Digium
 - Others
- Other platforms
 - Mitel / Shoretel - Continue to support (opportunistic)
 - Unify - Continue to support (opportunistic)



Spectralink DECT Infrastructure Direction



DECT Handset Portfolio today and tomorrow:

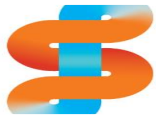


Key Software Solution Focus Across All Products



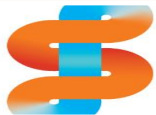
Location Services

- Precise Location Tracking
- DECT Base Station based triangulation
- Bluetooth LE based tracking



Lone Worker Solutions

- Man-down, no movement & running detecting
- Alarms & Alerts
- Broadcast messaging support (e.g. "fire in zone N")



Enterprise Messaging

- User advanced secure messaging
- System to user & group secure messaging
- Messaging alerts & alarms



Enterprise Grade Security


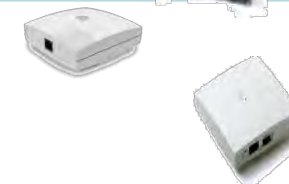
- End-End IP security
- Over-the-air DECT security support
- Extensive audit logging



IoT Support & Cloud Integration

- Bluetooth LE support
- DECT ULE Support
- Cloud based Analytics (SpectraCloud)

DECT Server & RFP Portfolio innovation (high-level roadmap)

#	Segment	DECT Controllers & Radio	FY	Remarks
1	SOHO/SMB	<ul style="list-style-type: none"> ▪ New 200 (SOHO) ▪ 400 (Small SMB) 	2018	200: Single Cell / ITSP / Volume. Add: Redirection / SIP line sharing. Colour: Black
2	SME/Enterprise	<ul style="list-style-type: none"> ▪ 6500 ▪ IP-Gateway 	2019+	Use 2500 / 8000 as base Build IP "Gateway" for connecting Digital B/S to IP-DS
3	Hybrid/Migration	<ul style="list-style-type: none"> ▪ 2500 ▪ 8000 	2020+	Minimize dev & maintain. Support digital Infra with IP-Gateway
4	All Radio	<ul style="list-style-type: none"> ▪ New Repeater ▪ New IP B/S ▪ New Digital B/S 	2020+	<u>Repeater</u> : Centralise management, improved antenna, new design <u>B/S & IP B/S</u> : Improved CPU / RAM; Improve Antenna; F/W: ULE



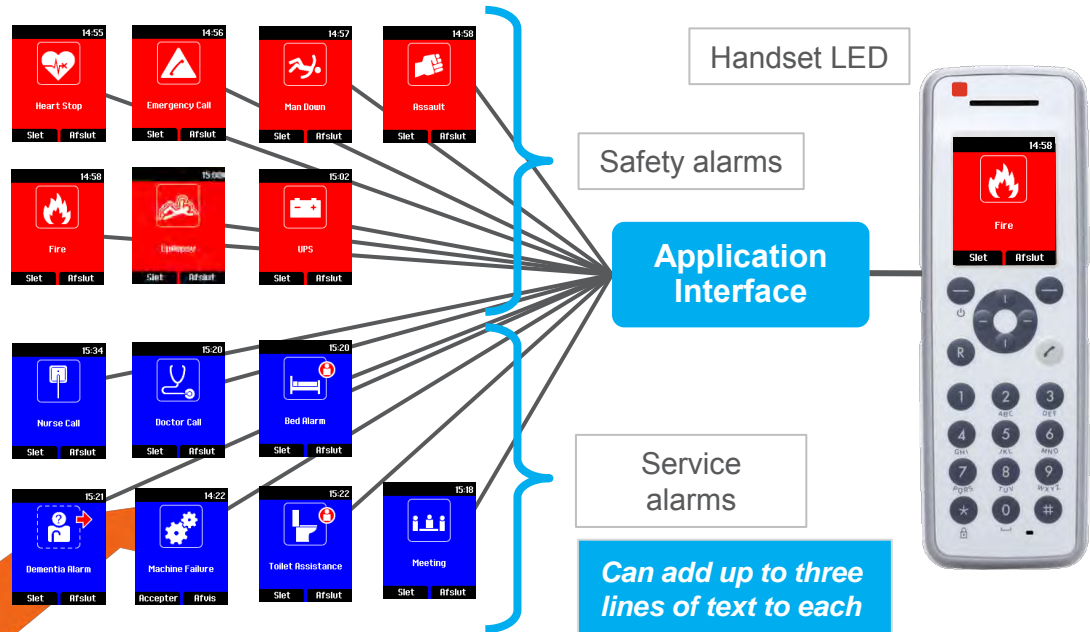
DECT Handset Application Possibilities

Broad 3rd Party Application Integration

Enable Innovative Solution & Even Greater Productivity

- DECT AIMS application integration

- Text messaging
- Broadcast messaging
- Location detection
- Task list
- Detection & alarm for:
 - Alarm button
 - Man-down
 - Pull cord
 - User running



Third-party application integration through an open XML protocol as API

DECT Application Integration Management Solutions (AIMS)



The industry's largest ecosystem of application partners to deliver enhanced solutions



INTRODUCING

VERSITY

THE SAVVIEST PURPOSE-BUILT
ENTERPRISE SMARTPHONE



The challenge



YOU REQUIRE A SOLUTION THAT EMPOWERS WORKERS IN NEW WAYS



MOBILITY SOLUTIONS CAN GIVE YOUR WORKERS ACCESS TO DATA, TEAMS AND INFORMATION FROM ANYWHERE



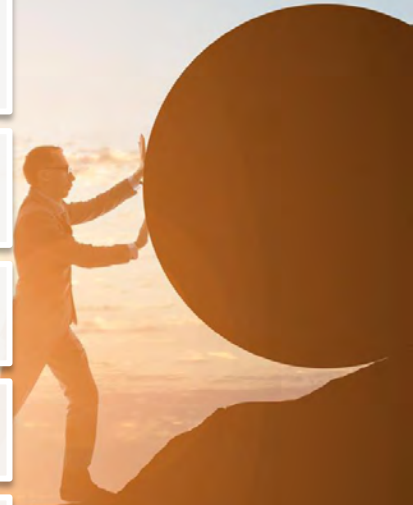
HOWEVER, BIGGEST MOBILITY CHALLENGES STILL EXIST WITH WI-FI COVERAGE OR MOBILITY VOICE




YOUR WORKERS WANT WHAT THEY USE PERSONALLY



TODAY'S RUGGED SMARTPHONES OR CONSUMER DEVICES STILL FALL SHORT





Where do today's consumer smartphones fall short?

TCO – Lifecycle <18 months

Purpose-built capabilities

Swappable batteries

Enterprise-grade security and management

Wi-Fi voice challenges

Ruggedness

Shared devices

Enterprise-level maintenance

Where do today's rugged smartphones fall short?



Bulky, heavy, brick-like

Wi-Fi voice challenges

VQO for 3rd party voice/video apps

TRUE hot swappable batteries

Third party interoperability

The Savviest Purpose-Built Enterprise Smartphone

SLEEK, SLIM & LIGHT

INDUSTRY SAVVY

PURPOSE-BUILT

ENTERPRISE CAPABLE
& FORTIFIED

HIGHEST QUALITY
VOICE

LATEST TECHNOLOGIES

Versity

12:06

Sleekest, slimmest
and lightest



**Sleeker, more consumer-like
smartphone form factor**

- **Width:** 153x76x12 mm
- **Weight:** 204 g, 214 g (scanner)

Maximum display size to fit in one hand

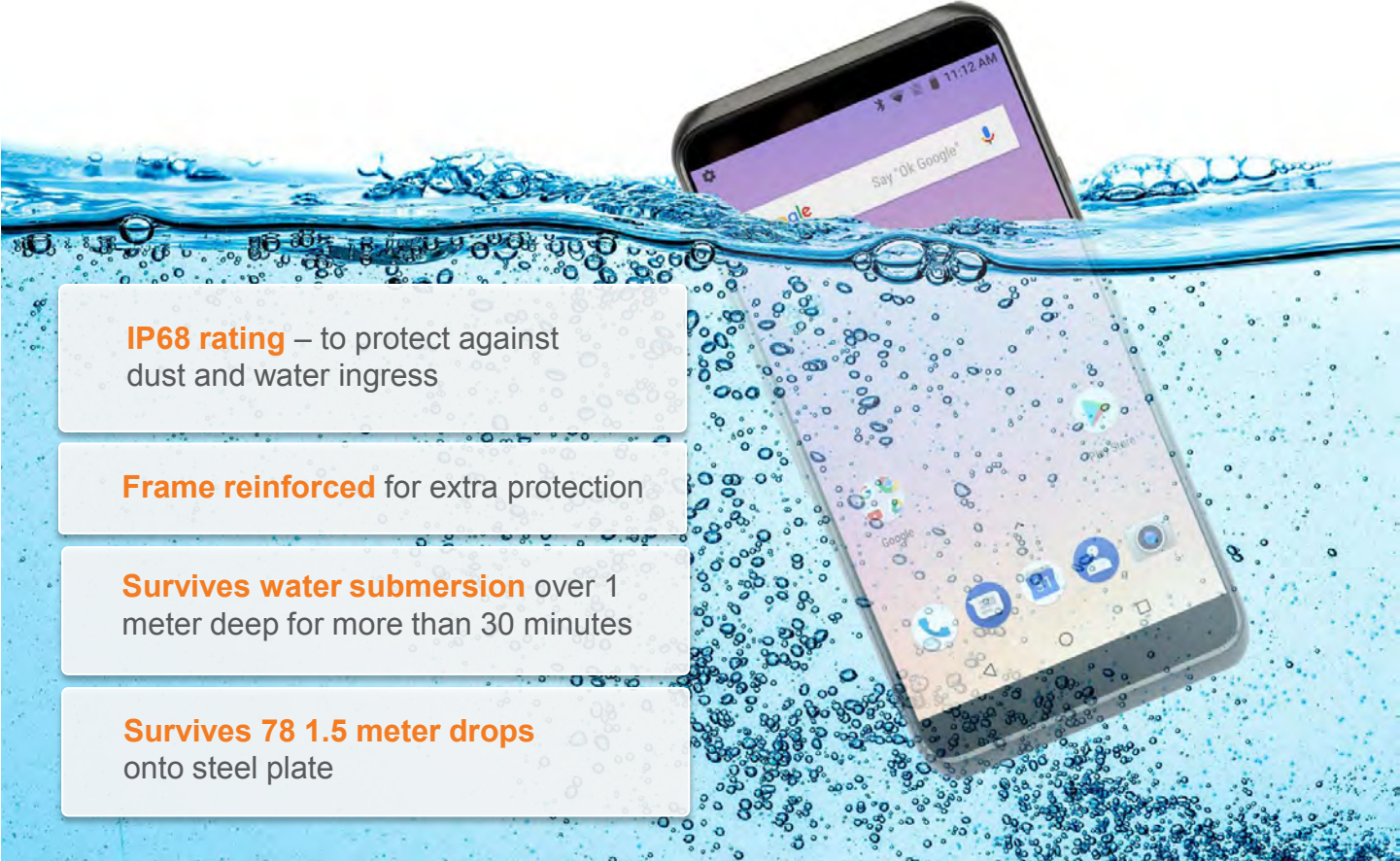


Bright 5.2 inch display

High-resolution 1080x1920 display

Like a consumer smartphone

Rugged to withstand tough environments



IP68 rating – to protect against dust and water ingress

Frame reinforced for extra protection

Survives water submersion over 1 meter deep for more than 30 minutes

Survives 78 1.5 meter drops onto steel plate



ALWAYS ON COMMUNICATIONS

In-building Wi-Fi Communications

Off premise communications with LTE


The ONLY True Hot Swappable Batteries

Hot swap battery
while on a call

Hot swap battery
while in an
application

Eliminate need to
check for battery life

HOT
SWAPPABLE
BATTERY



The ONLY Voice Quality Optimization (VQO) Technology

Voice Quality Optimization (VQO)
for roaming on Wi-Fi networks

Optimization for third-party UC
voice/video apps

Noise suppression, echo
cancellation, audio volume

Industrial strength barcode scanner for retail

1D and 2D barcodes

Fast and accurate

Exceptional range

Works in low-light conditions

**Eliminate
additional
scanner
hardware**

And more...



Fingerprint reader

RTLS Location

USB type C

Single sign-on capable

LTE

There Are 4 Versity Smartphone Models

95-SERIES

9540

Streamlined design with slimmer profile

9553

Dedicated, built-in barcode scanner

96-SERIES (LTE)

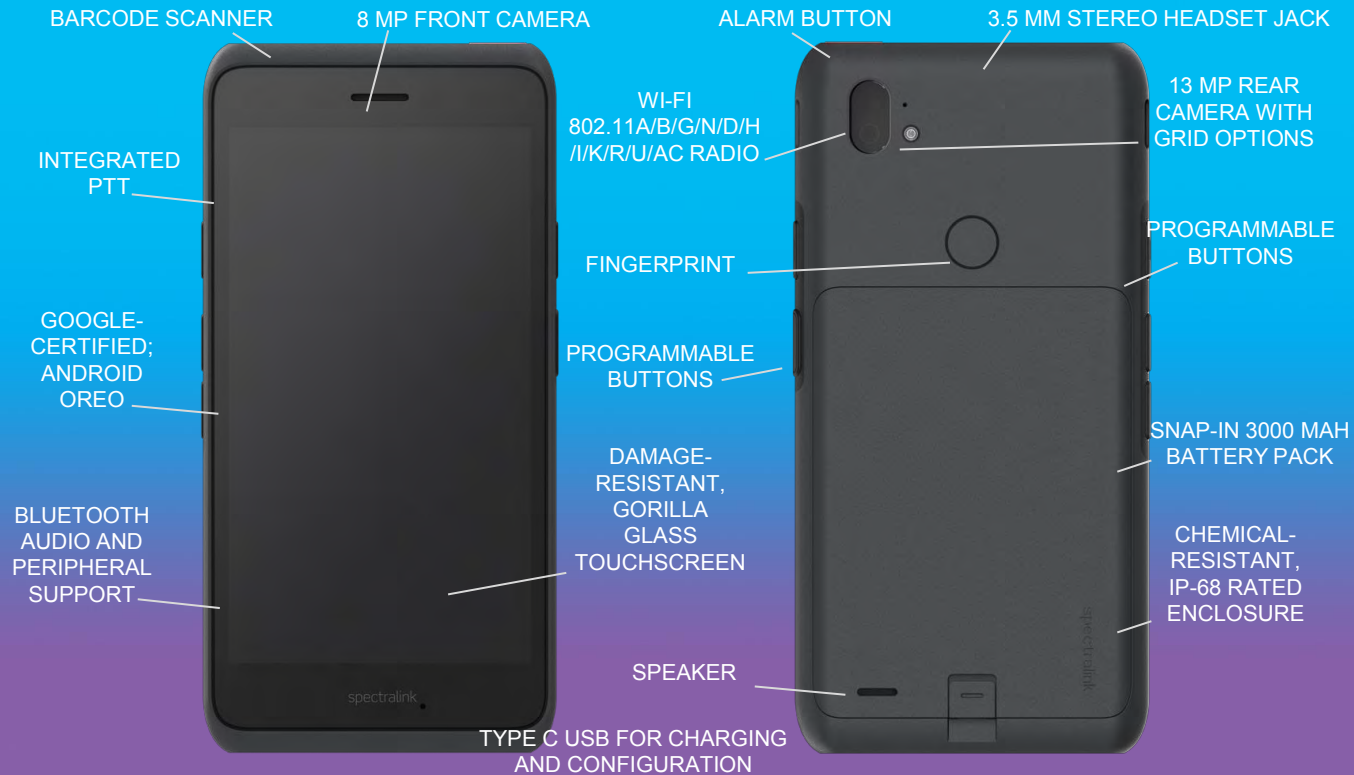
9640

Streamlined design with slimmer profile

9653

Dedicated, built-in barcode scanner





Accessories



BELT CLIP



LEATHER CASE



PVC CASE



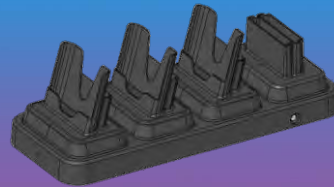
STYLUS



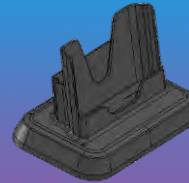
TYPE C USB CHARGER



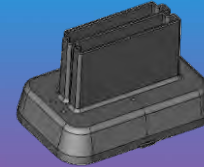
REPLACEABLE BATTERY



MULTI-CHARGER BASE



DESKTOP DUAL CHARGER



TWIN CHARGER



No matter how you work, Spectralink has a solution to help you work smarter!

Armin.Dominick@spectralink.com
www.spectralink.com

spectralink 